

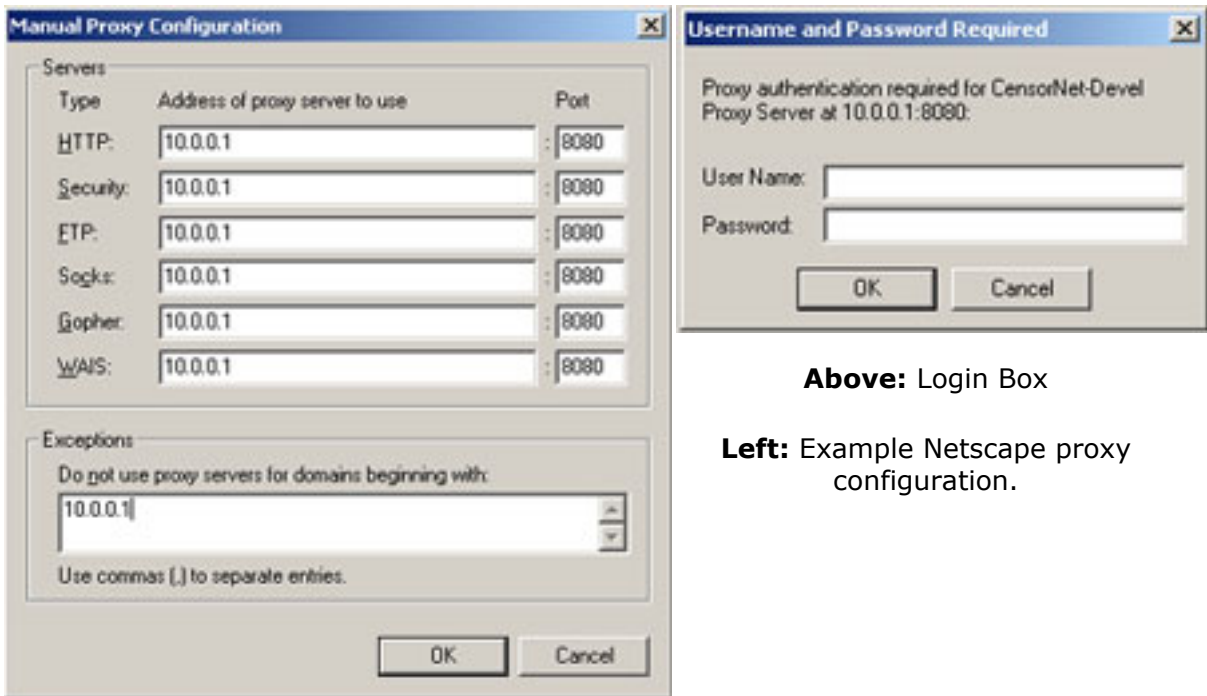
Browser Configuration Guide

Contents

Browser Configuration Guide	1
Configuring Netscape 4.x and 6.x for Proxy Services	2
Configuring Internet Explorer 5+ for Proxy Services	3

Configuring Netscape 4.x and 6.x for Proxy Services

1. Launch **Netscape**
2. From the Edit Menu select **Preferences**
3. Select the **Advanced** Category
4. Select the **Proxies** option
5. Click on the **Manual Proxy Configuration** radio button then press "**View...**"
6. Type in the edit boxes the IP address of your **CensorNet** server and the port number, which is **8080** (see diagram below).
7. In the "**Exceptions**" edit box, type the IP address of your CensorNet server. This is **important** (see diagram below)!
8. Click **OK** to save the new proxy configuration.
9. From now on, when a request is made to access the Web you will be presented with a dialog box to input your **username and password**. This is the same username and password used to log onto the network (i.e. stored on the PDC or Active Directory server). See diagram below.
10. Enter your username and password to authenticate.
11. Once authenticated the user will be able to browse the Web subject to their user access profile (set using the CensorNet Administration Tool).



Above: Login Box

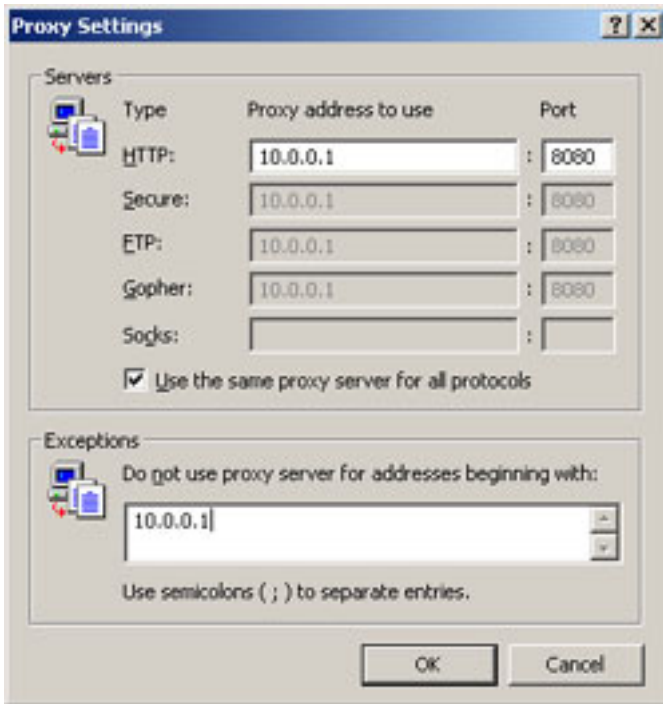
Left: Example Netscape proxy configuration.

IMPORTANT!

You must register the MAC (physical) address of the workstation with CensorNet to allow the machine access to the proxy server! See the documentation for details.

Configuring Internet Explorer 5+ for Proxy Services

1. Launch Internet Explorer 5+
2. From the **Tools** menu select **Internet Options**
3. Select the **Connections** tab
4. Click the **LAN Settings** button
5. Check the **Use a Proxy Server** check box
6. Click the **Advanced** button
7. In the **HTTP** edit box type the IP address of your **CensorNet** server – see diagram below
8. Type the **port** number: **8080**.
9. Check the **Use the same proxy for all protocols** check box
10. In the exceptions edit box, add the IP address of your **CensorNet** server. This is **important!** – See diagram below
11. Click **OK** twice to return to the browser window
12. From now on, when a request is made to access the Web you will be presented with a dialog box to input your **username and password**. This is the same username and password used to log onto the network (i.e. stored on the PDC or Active Directory server). See diagram below.
13. Enter your username and password to authenticate.
14. Once authenticated the user will be able to browse the Web subject to their user access profile (set using the CensorNet Administration Tool).



Above: Login Box

Left: Example Internet Explorer proxy configuration.

IMPORTANT!

You must register the MAC (physical) address of the workstation with CensorNet to allow the machine access to the proxy server! See the documentation for details.