

How to Install & Configure the APC SmartUPS 420 for use with CensorNet

This document will guide you through the steps needed to install and configure the APC SmartUPS 420 with CensorNet version 3.x.

Please ensure that you have a monitor and keyboard attached to the CensorNet server before starting this procedure.

Step 1 – Shutdown your CensorNet Server

Before you can connect the UPS you must first shut down your CensorNet server. To do this:

```
Debian GNU/Linux 3.0 [CensorNet 3.1] tty
censornet login: root
Password:
```

- At the login prompt, enter the username "root" and press enter.
- Enter your root password when prompted.
- Type "halt" to power down the server. This process will take approximately 30 seconds.

```
censornet:/home/admin# halt
```

- When you see the message either "System Halted" or "Power Down" it is safe to pull the power cable out of the back of the machine.

Step 2 – Connecting the Cables

You will have received a Smart Serial cable and power cables with your SmartUPS 420 pack.

- Remove the mains power cable from the back of the CensorNet machine and connect it to the mains power socket on the back of the UPS.
- Connect one end of the UPS power cable to the back of your CensorNet machine and the other end to one of the bottom three power outlets marked "Surge Protection & Battery Backup" on the back of the UPS.
- Now connect the Smart Serial cable supplied to the serial port on the back of the UPS and the other end to the uppermost serial port on the CensorNet server.
- Turn the UPS on as described in the APC UPS user manual.
- If your CensorNet server does not power on automatically then turn it on using the power button on the front of the case.

Step 3 – Configuring CensorNet

When your CensorNet server has powered up and you have the login prompt in front of you, you must log in as root again and type "setup" at the prompt.

```
Debian GNU/Linux 3.0 (CensorNet 3.1) tty
censornet login: root
Password:
```

```
censornet:/home/admin# setup
```

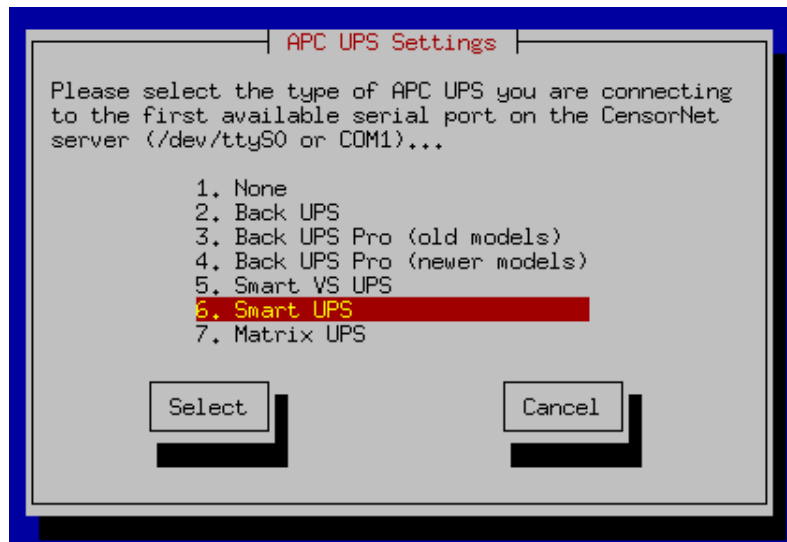
- Press enter at the first screen.
- Use the cursor keys to choose option "10. APC UPS Configuration" and press Enter.

```
9. B.L.Ü.D. v2 Configuration
10. APC UPS Configuration
Ok Quit
```

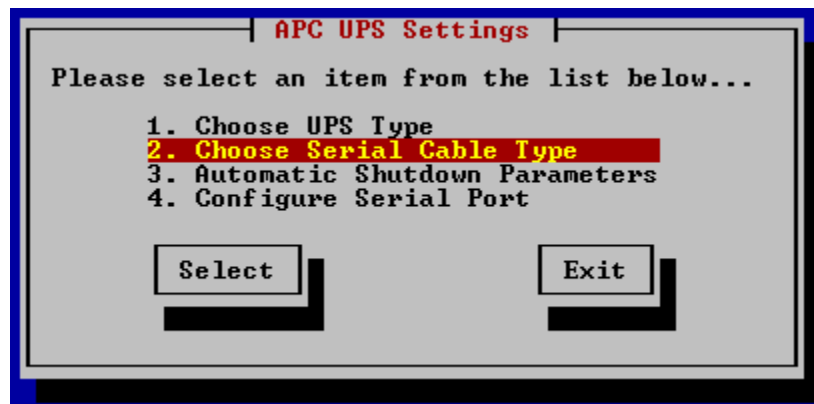
- Choose the "Choose UPS Type" from the APC UPS Settings by pressing Enter.

```
APC UPS Settings
Please select an item from the list below...
1. Choose UPS Type
2. Choose Serial Cable Type
3. Automatic Shutdown Parameters
4. Configure Serial Port
Select Exit
```

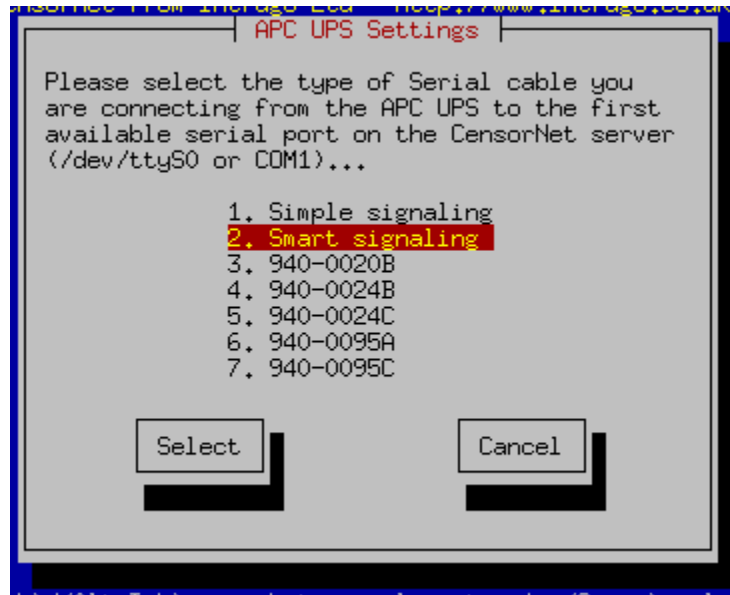
- Select "Smart UPS" from the list using the cursor keys and press Enter.



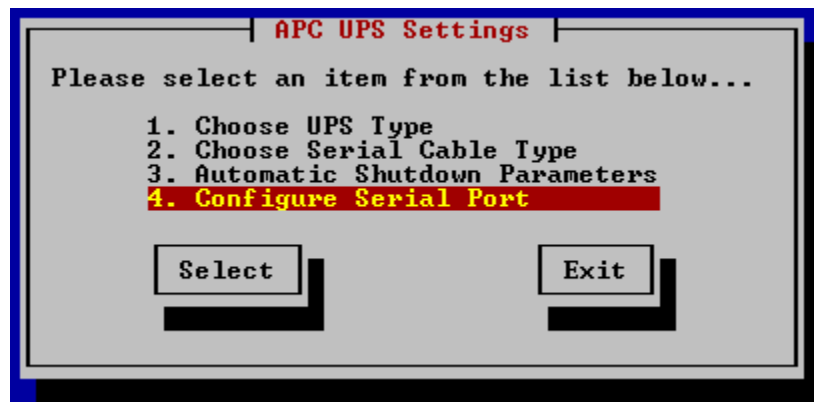
- Now choose "Choose Serial Cable Type" from the APC UPS Settings menu.



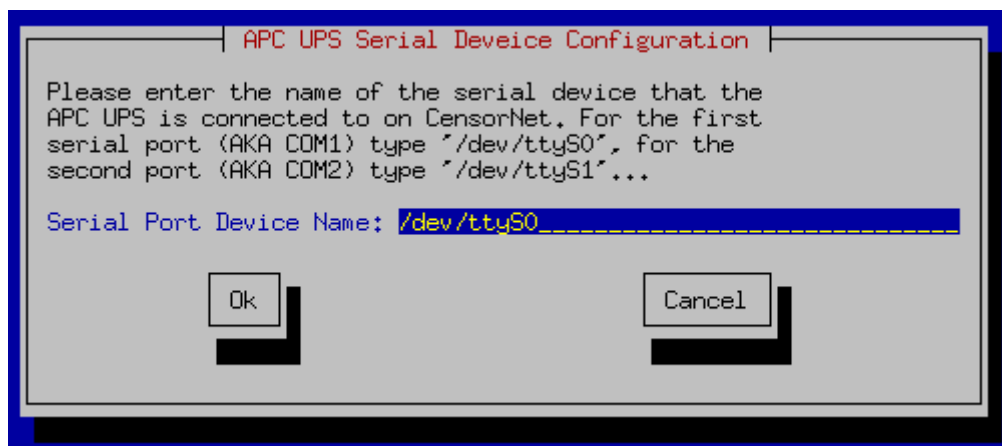
- Choose "Smart signalling" and press Enter.



- Choose "Configure Serial Port" from the APC UPS settings menu.



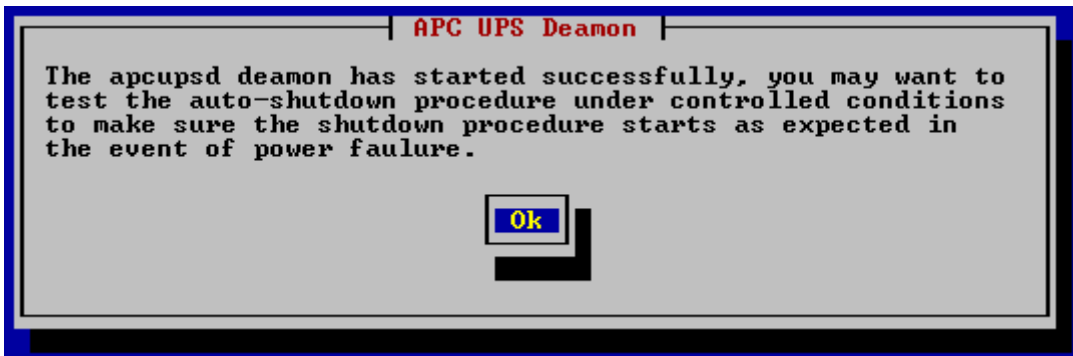
- Ensure the "Serial Port Device Name" is set to "/dev/ttyS0" as shown below and press Enter:



- Now use the tab key to select "Exit" from the APC UPS settings menu.



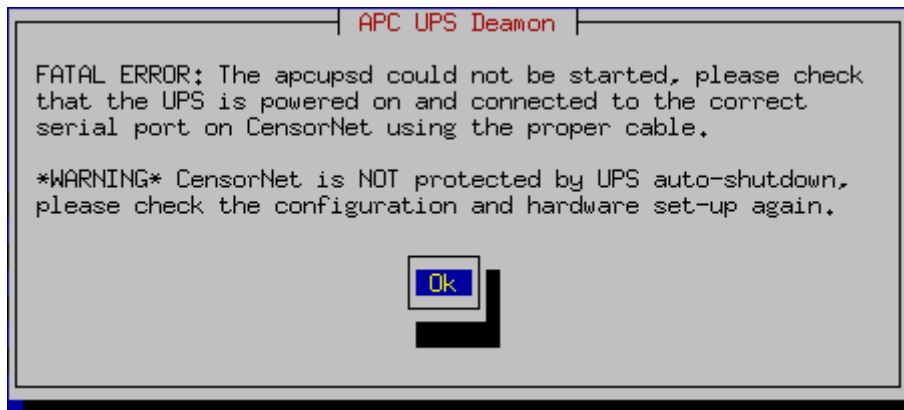
- You should see the following message if the UPS has been configured successfully:



- Press Enter and then use the tab key to select the "Quit" button.
- Now type "exit" twice to return to the login prompt.
- It is now save to disconnect the monitor and keyboard.

TROUBLESHOOTING

If you receive the following error message:



- Check that you have used the SMART serial cable from the UPS pack.
- Check that the serial port is enabled in the computer BIOS.