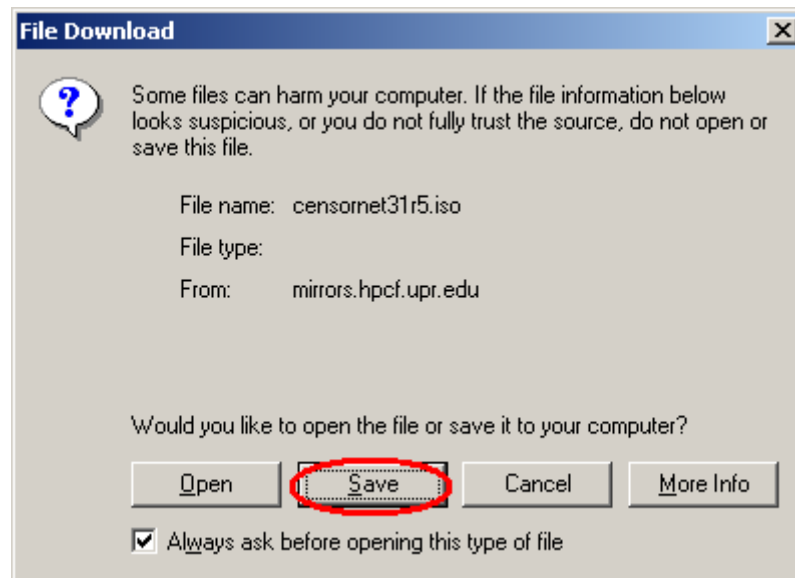


How to create a CensorNet Installation CD-ROM using Nero

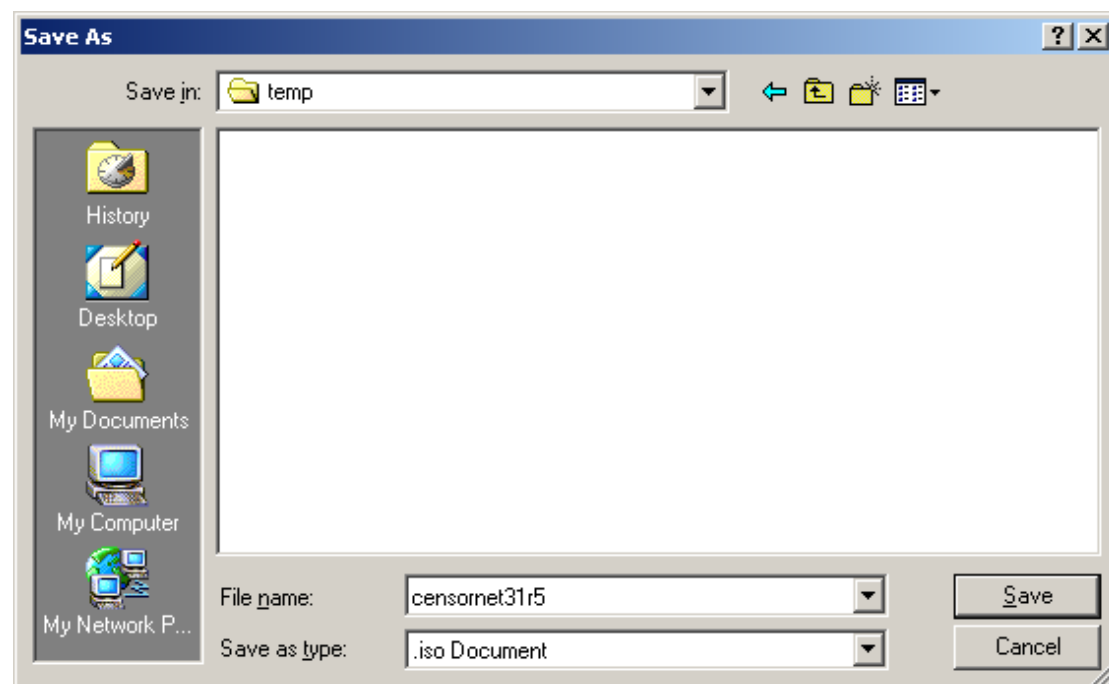
CENSORNET MUST BE INSTALLED ON A DEDICATED MACHINE. THE CENSORNET INSTALLATION PROGRAM WILL COMPLETELY DESTROY/FORMAT/ERASE ALL THE DATA ON THE HARD DISK BEFORE INSTALLING CENSORNET. DO NOT INSTALL CENSORNET ON A MACHINE WITH SENSITIVE OR IMPORTANT DATA OR IT WILL BE LOST.

Step 1 – Download the CensorNet ISO File

Visit <http://www.censornet.com> and click on the "GPL Download" Link. Choose the latest stable version of CensorNet and click on the link to start downloading the ISO.

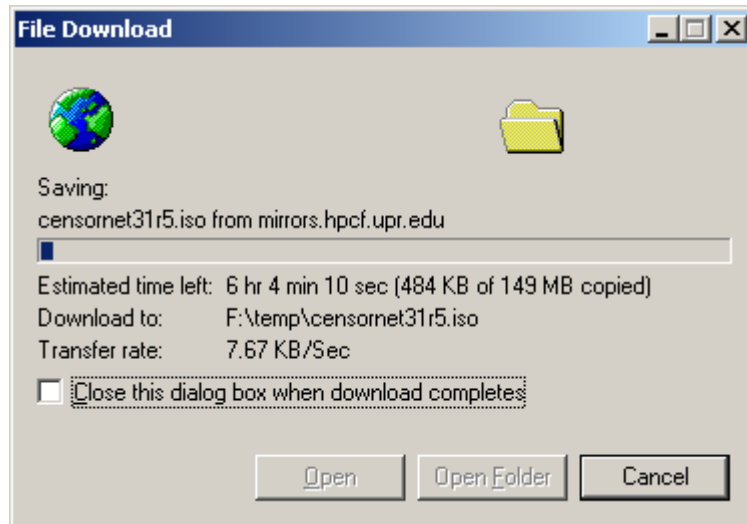


When prompted, click "Save" to save the ISO file to disk.



Choose a location for the ISO file such as "C:\TEMP". Remember where you put the ISO file because you will need to find it again later for Step 2 ☺

The ISO will start to download. The ISO file is typically 160Mb in size so unless you have a broadband connection you might want to consider purchasing CensorNet on CD-ROM. Please see <http://www.censornet.com> for more details on ordering a CD-ROM.



Wait until the download has successfully completed before proceeding to the next step.

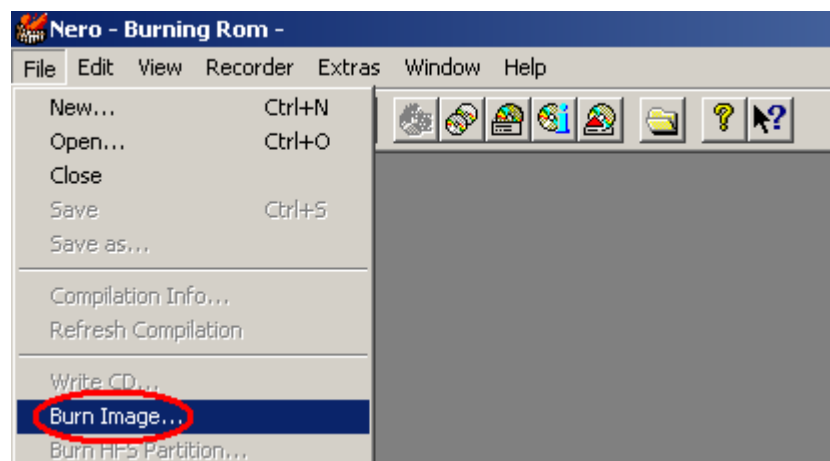
Step 2 – Burning the ISO to CD

We recommend you use Nero from Ahead Software to burn the ISO image to CD. To download Nero, please visit <http://www.nero.com>. Other CD writing software may support burning ISO images but they will not be covered in this document.

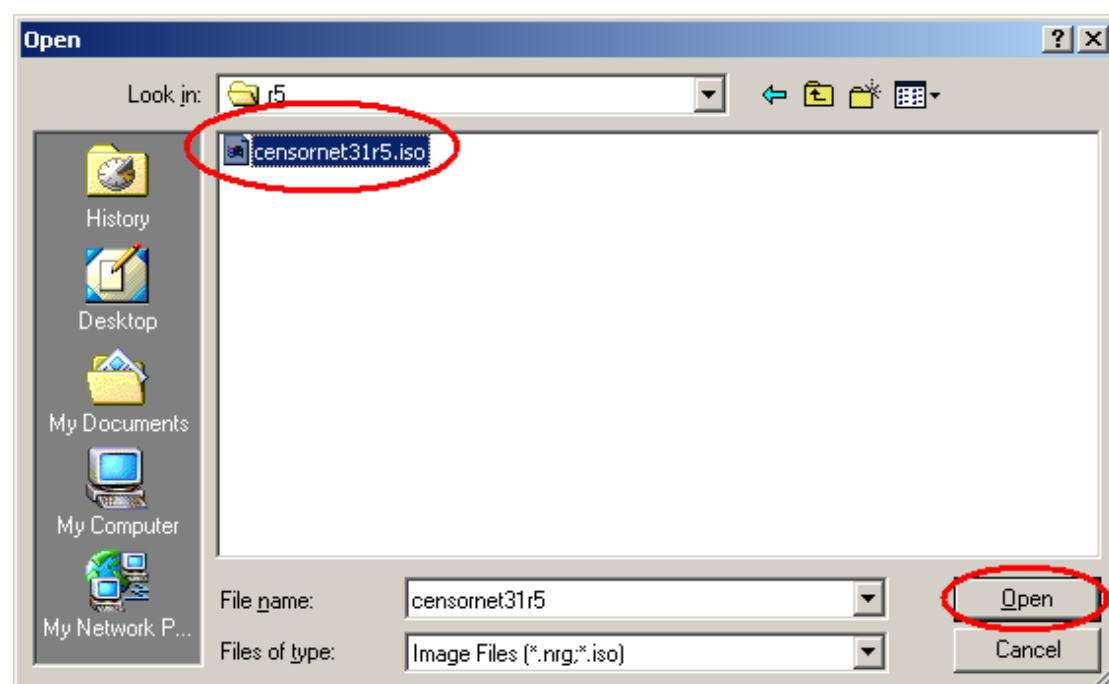
1. Insert a blank CDR into your CDRW drive.
2. Load Nero by double clicking on the desktop icon or by using the Start menu.



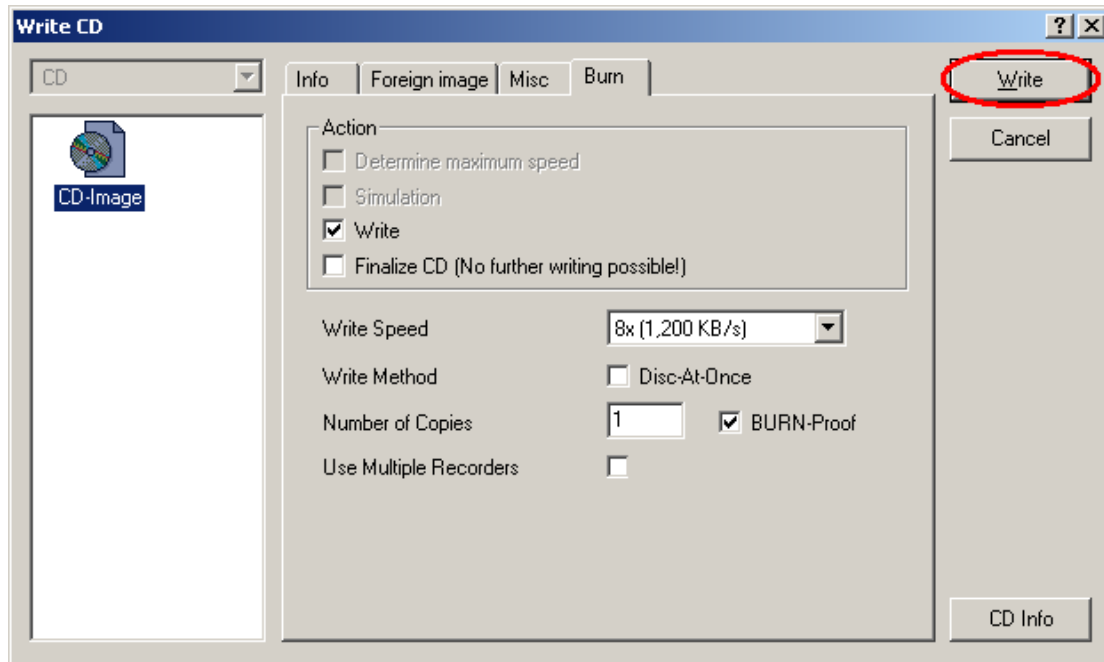
3. Go to the File menu and choose "Burn Image".



4. Find the ISO that you downloaded in Step 1 then click "Open".



5. Check that the Burn options are correct for your CD writer and then click "Write".



6. Wait while Nero burns the ISO to CD.

Once Nero has successfully burnt the ISO you will have a CensorNet installation CD.

Insert your CensorNet Installation CD into the CD-ROM drive of the computer you wish to install CensorNet on. Reboot the computer and CensorNet will automatically start to install. Remember – CensorNet will format the hard disk as part of its installation procedure!

Follow the on-screen prompts to install CensorNet.

Additional documentation is available from <http://www.censornet.com>.

Troubleshooting

Q. I have burnt my installation CD but when I reboot the computer CensorNet does not install.

A. You must set the boot order in your BIOS so that the CD-ROM boots before your primary hard disk. Refer to your motherboard manual for details on how to set the boot order. If the problem persists it is likely that your motherboard is too old to support the mechanism that CensorNet uses to boot from CD.

Q. The installation program has started but it does not find any IDE disks even though I have an IDE drive in the machine.

A. The IDE drive must be set to primary master. Refer to your hard disk manual for further details.

Q. The installation program tells me I do not have any IDE disks. This is true, but I do have a SCSI drive.

A. As long as CensorNet supports your SCSI controller then you can use the "Advanced" button to choose the SCSI devices to use.